

# TOWSON LIVE

June 2022



## Inside this Issue

Annual June Meeting	1
Towson Farmers Market	2
Feet on the Street	3
Spring Mega Networking	4
Golf Tournament	5
4th of July Race & Parade	6
Spring Festival Highlight	7
New Members	8
Annual June Meeting	9
Member-to-Member	10
Alzheimer's Association	11
The Mine Corporate Membership	12
Jerry's Toyota	13
Tap Into TU	14
Mercury Apartments	13
Board of Directors	14
2022 Member Application	15

## *June Cocktail Party*

JOIN THE TOWSON CHAMBER FOR THE ANNUAL JUNE COCKTAIL PARTY!

WE WILL BE SWEARING IN THE EXECUTIVE BOARD AND NEW BOARD MEMBERS.

WEDNESDAY, JUNE 15  
5:00 PM - 8:00 PM  
CHARLES VILLAGE PUB & PATIO  
19 W PENNSYLVANIA AVENUE  
TOWSON, MD 21204

OPEN BAR & HORS D'OEUVRES  
MEMBERS \$35  
NON-MEMBERS \$45  
PLEASE RSVP BY JUNE 10  
[WWW.TOWSONCHAMBER.COM](http://WWW.TOWSONCHAMBER.COM)

**TOWSON LIVE**

# *Towson Farmers Market Every Thursday!*

**JUNE 2 - NOVEMBER 17  
10:30AM-2:30PM  
ON ALLEGHENY AVE  
BETWEEN YORK RD &  
WASHINGTON AVE**



[www.towsonchamber.com](http://www.towsonchamber.com)

410-825-1144

@TowsonFarmersMarket

# **FEET ON THE STREET IS BACK ON ALLEGHENY AVE!**

**Come out with friends and relax with some music, beverages, food, and moon bounces!**

**Allegheny Avenue between York Road & Washington Avenue**

**June:**

**6/3: Year of the Tiger Celebration**

**Mzz B & Company**

**6/10: Jury**

**6/17: TBA**

**6/24: Crushing Day**

**July:**

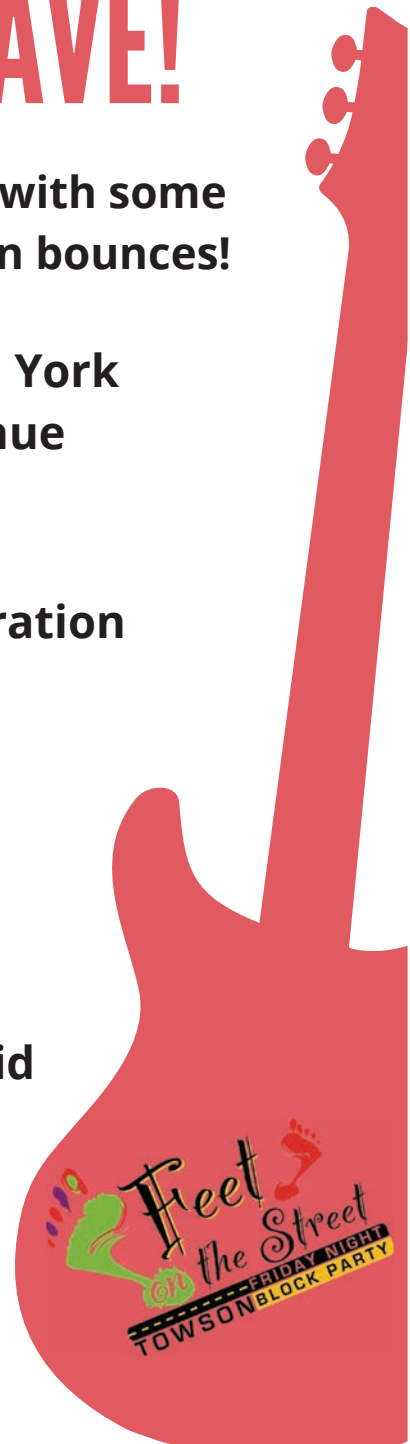
**7/1: That's What She Said**

**7/8: Sagamore**

**7/15: Jury**

**7/22: Sugar Jack**

**7/29: Crushing Day**



No outside coolers or beverages



# Spring MEGA Networking Event



Thursday, June 9, 2022 5:30-8:00 pm

Marriott Owings Mills Metro Centre  
10101 Grand Central Ave., Owings Mills, MD 21117

**Network with 100s of business professionals  
from Baltimore County & meet Gubernatorial Candidates,  
Including Peter Franchot, Kelly M. Schulz, & Doug Gansler**

Exhibitor tables are available! Show off your business for only \$150 (includes one attendee ticket); \$200 for non-members. Limited availability, so don't delay!  
Gubernatorial candidates will be on hand for informative discussions with you.

**Pre-Registration by June 2nd: Members \$60; Non-Members \$75**

**At The Door: Members \$70; Non-Members \$85**

Ticket includes heavy hors d'oeuvres & one drink ticket. Cash bar available.

Parking will be validated at the event.

**Register online today!** <https://www.towsonchamber.com/events/summer-meganetworking-event/>

**EVENT SPONSORED BY:** Baltimore County Chamber of Commerce, Baltimore County Business Association, Catonsville Chamber of Commerce, Chesapeake Gateway Chamber of Commerce, Dundalk Renaissance Corp., Greater Arbutus Business Association, Greater Baltimore Chamber of Commerce, Hereford Zone Business Association, Hunt Valley Business Forum, Northwest Chamber of Commerce, Perry Hall/White Marsh Business Association, Parkville-Carney Business Association, Towson Chamber of Commerce.



## 58<sup>th</sup> Annual Golf Tournament



Monday, June 13, 2022

9:00 a.m. Lite Breakfast Fare, Mimosas, Bloody Marys & Registration | 10:00 a.m. Shotgun Start  
Beer, cocktails, sodas, Chick-Fil-A while on the course & a "cookout" lunch provided

Please indicate the amount you wish to purchase next to the appropriate category:

\_\_\_\_\_ **Title Sponsorship - \$4,000 ~~SOLD~~**

*Includes:* 3 Foursomes, you're the lunch sponsor and can speak for a few minutes, 12 mulligans and 12 putting contest for group, lunch bag sponsor, 3 tee signs, opportunity to network at two holes. You'll be a sponsor of a chamber meeting 70-85 people.

\_\_\_\_\_ **Beverage Cart Sponsor - \$1,500 ~~SOLD~~**

*Includes:* 1 Foursome, acknowledgement in the official tournament program, 2 tee sponsorship, 3 beer & beverage stations throughout the course with logo, and 1 beverage cart with logo.

\_\_\_\_\_ **Corporate Sponsorship - \$1,000**

*Includes:* 1 Foursome, acknowledgement in the official tournament program, tee sponsorship, 4 mulligans 4 putting contest, 4 Power balls

\_\_\_\_\_ **Chick-Fil-A Sponsor - \$750 ~~SOLD~~** *Includes:* 1 Foursome, acknowledgement in the official tournament program, tee sponsorship, 4 mulligans, 4 Putting Contest, 4 Powerball

\_\_\_\_\_ **Foursome - \$600**

\_\_\_\_\_ **Individual Player - \$165**

\_\_\_\_\_ **Sponsor a tee - \$150**

*Includes:* signage on the course

Total from above: \$ \_\_\_\_\_

### Optional Additional Fees:

# \_\_\_\_\_ Additional Lunch Guests (\$30 each – *includes cocktails*)

**Invite your non-golfer co-workers for lunch after the round!**

*Please include name(s) of guest(s)* \_\_\_\_\_

# \_\_\_\_\_ Mulligans (\$10 each) *\*Only 2 per person allowed; purchase of 8 must be for a team*

# \_\_\_\_\_ Putting Contest tickets (\$10 each – *includes 3 balls*)

# \_\_\_\_\_ 50/50 Raffle Tickets (\$10 each)

# \_\_\_\_\_ Power Ball (\$10)

# \_\_\_\_\_ 1 Mulligan, 1 Putting Contest, 1 Power Ball (\$25) **BEST VALUE**

Grand Total: \$ \_\_\_\_\_

Payment type (please check one):  Credit Card\*  Check  Cash

*\*If paying via credit card, a 4% service fee will be added to your total.*

*To make a credit card payment, call 410-825-1144.*

Company: \_\_\_\_\_ Phone: \_\_\_\_\_

Main contact e-mail: \_\_\_\_\_

Player 1: \_\_\_\_\_

Player 2: \_\_\_\_\_

Player 3: \_\_\_\_\_

Player 4: \_\_\_\_\_

# TOWSON LIVE



## ★ TOWSON 4TH OF JULY PARADE

**Monday, July 4th  
10:30 am - 12:30 pm**

Support the Parade & Donate today

[www.towsonparade.com](http://www.towsonparade.com)



**Don't forget to register for Towson's  
4 on the 4th Race**

<https://runsignup.com/Race/MD/Towson/Towson4onthe4th>

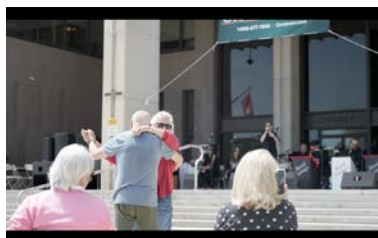
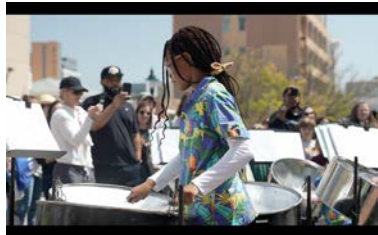


Your neighbor.  
Your guide.  
Your bank.



# TOWSON LIVE

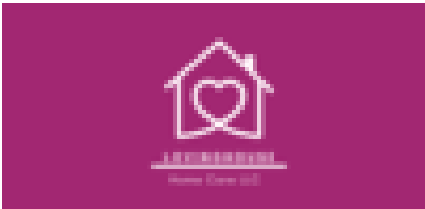
## TOWSON TOWN SPRING FESTIVAL



Check out the Festival Highlight video on the Towsontown Festival Facebook page!

# TOWSON LIVE

## NEW MEMBER SPOTLIGHT Welcome to the Towson Chamber!



### **Loving House Homecare LLC**

Latea Williams  
600 E Joppa Rd, Suite 2R  
Towson, MD 21286  
(443) 331-5092  
Home Health Care Service



### **Wings Ahoy**

Lertkiet Lertchayantee  
905 York Road  
Towson, MD 21204  
(443) 275-4916  
Restaurant



### **Guerilla Realty**

Rachel Rabinowitz  
30 E Susquehanna Ave  
Towson, MD 21286  
(443) 841-5916  
Real Estate



*Senior Living and Care Solutions*

### **Senior Care Authority - Baltimore Metro**

Mary Singer  
100 West Road Suite #300  
Lutherville-Timonium, MD 21204  
(410) 935-4932  
Assisted Living Facility



### **Fidelity Investments**

Jason Powell  
610 York Road  
Towson, MD 21204  
(410) 296-1970  
Investments



### **Hale Home Solutions**

Michael Hale  
904 Stone Barn Rd.  
Towson, MD 21286  
(410) 979-3737  
Home Improvements



*Please Join Us!*

## **Annual June Meeting/Cocktail Party**

Wednesday, June 15

5:00pm - 8:00pm

*Open Bar & Hors d'oeuvres*

### **Charles Village Pub & Patio**

19 W Pennsylvania Avenue

Towson, MD 21204

**Members \$35**  
**Non-Members \$45**

Please RSVP online  
[www.towsonchamber.com](http://www.towsonchamber.com)

### **Have you renewed your membership for 2022?**

Membership can be renewed by sending a check to the Chamber office or over the phone via credit card:  
**410-825-1144**

Questions? Contact Calixta  
[calixta@towsonchamber.com](mailto:calixta@towsonchamber.com)

### **Advertising & Promotion Opportunities**

#### **One-Page Insert**

Advertise a special sale or promotion with an 8.5x11" insert for \$50 in our monthly newsletter. Advertising for community events is free.

#### **Email Sponsorship**

"Sponsor" an email that goes out to over 1500 business contacts. Includes your logo and a click-through to your website. (Costs vary)

#### **Towson Times**

Advertise in the Towson Times (costs vary)

#### **Questions?**

Contact: Nancy Hafford  
[nancy@towsonchamber.com](mailto:nancy@towsonchamber.com)

# TOWSON LIVE

## Member-to-Member Benefits

*Enjoy these specials offered exclusively for members of the Towson Chamber. Businesses may reference the Chamber Directory, or contact the Chamber office to confirm eligibility.*

### **The Mine- Anne Marie Barbour [annmarie@themine.fit](mailto:annmarie@themine.fit)**

As a member of the Towson Chamber you have access to The Mine Corporate Membership. Remember you don't need 5 or more, anyone from the Towson Chamber can get it, IF your company wants to get this rate, they will have to get 5 or more.

### **Staples**

10% off in-store purchases and 20% off printing and marketing services.

### **Towson University- Chunta Rivers [crivers@towson.edu](mailto:crivers@towson.edu)**

Towson University and the Towson Chamber of Commerce have agreed to a corporate training partnership that provides access to professional development opportunities. The Towson Chamber of Commerce members are eligible to receive 20% off certification programs and 10% off fundamental programs.

### **Nancy Hofmann, Compass Realty & Live Towson- [Nancy.Hofmann@compass.com](mailto:Nancy.Hofmann@compass.com) -**

FREE professional home staging when you sell your home with Nancy Hofmann, Compass – Towson Office.

### **Fully Promoted Towson - Jessica Joyce, [jessica.joyce@fullypromoted.com](mailto:jessica.joyce@fullypromoted.com)**

One free digitizing of company logo (\$69.00 value) to all chamber members. Must mention member-to-member promo.

### **Integrated Pest Services - Sandy Jenkins, [service@ipspest.com](mailto:service@ipspest.com)**

10% off of all pest services for Towson Chamber members

### **RISE Biscuits and Donuts – David Brindza, [towson@risebiscuitsdonuts.com](mailto:towson@risebiscuitsdonuts.com)**

Free Sweet Treat Platter (\$31.95 value) to all Catering Breakfast and Lunch orders over \$100. Monday through Friday. Pickup between 7:30 am and 2 pm. Must mention the Member to Member promo.

### **Roland Park Chiropractic – Dr. Silke Laub, [DrLaub@rolandparkchiropractic.com](mailto:DrLaub@rolandparkchiropractic.com)**

Utilize this link for a 20% special discount on all supplements for chamber members. From Vitamin D or multivitamins, special men's health or women's health supplements: <https://wellevate.me/silke-laub>

### **The Point in Towson – Erica Russo, [erica@thepointrg.com](mailto:erica@thepointrg.com)**

20% off to all members for food, beverages and catering. Cannot be combined with any other discount or promotion.

## The 10% Rule

Keep your business local and make 10% of your expenditures stay within Towson. Just think of the impact... If a company grosses \$300,000.00 per year and they see an additional 10% or \$30,000.00, that could mean hiring someone, expanding product lines, or making their interior and exterior look better.

Keep business in Towson and create a positive environment for our community!

# TOWSON LIVE



The Alzheimer's Association presents an event for Corporate Leaders

## SHARED VALUE, SHARED SUCCESS:

Strengthen your company while advancing Alzheimer's care, support and research.

**Wednesday, June 8, 2022 | 7:30AM - 9:00AM**

**Baltimore Marriott Waterfront Hotel**

700 Aliceanna St., Baltimore, MD 21202

Whether you are aware of it or not, your employees and customers are living with Alzheimer's disease or other dementias.

**Together, we can help.**

Fighting Alzheimer's disease is a cause that your entire organization can rally around.

Join our guest emcee, Mindy Basara of WBAL-TV 11 News Today and member of the 11 News I-Team, to learn more.



**Special Thanks to:**



**Please RSVP by June 1: [bit.ly/2022CorpALZ](https://bit.ly/2022CorpALZ)**

**Thank you to our 2022 Walk to End Alzheimer's Early Bird Sponsors**



# TOWSON LIVE



## THE MINE

The future is Mine and it's yours for the taking. Experience a health and wellness concept like no other. Located within The Shops at Kenilworth, The Mine is committed to helping each and every member be the best version of themselves. We embrace business' who do the same with our Corporate Wellness Memberships.

### Five Studios, One Roof

Our five, unique boutique studios are led by Baltimore's best. Immerse yourself; enjoy BARRE, YOGA, RIDE+, YARD, FORM all under one roof.

### From Pre- to Post-Workout

Sweat it out in our Open gyM, relax in our luxury locker rooms with private IR Saunas, enjoy our Juice Bar, co-working LOUNGE, and more.

Be a VIP; enjoy exclusive membership discounts as a Corporate Wellness Partner:

### GYM PASS

**\$74 PER MONTH**

Regularly \$99 per month

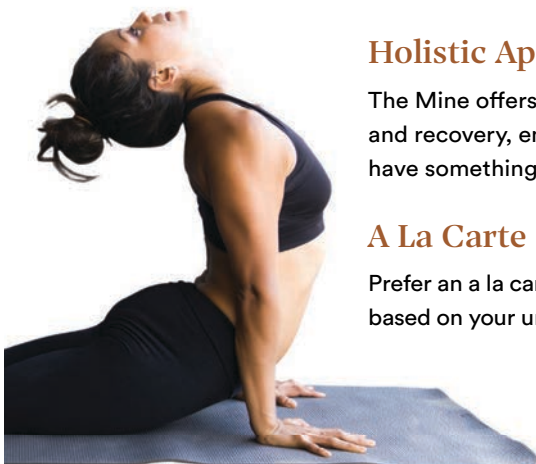
- Innovative Open gyM
- Top-of-the-line Technogym equipment
- Connected cardio with virtual coaches
- Access to Personal + Small Group Training

### STUDIO MPASS

**\$150 PER MONTH**

Regularly \$249 per month

- Open gyM + UNLIMITED access to: BARRE, YOGA, RIDE+, YARD
- Luxury locker rooms with IR Saunas
- Co-working LOUNGE and Juice Bar
- FORM Class Packs available (5 and 10 packs)



### Holistic Approach

The Mine offers a range of solutions and support across mindset, nutrition, movement, and recovery, enabling members to round out their efforts to reach their goals. We have something for just about every mood, goal, taste, experience level, and schedule.

### A La Carte

Prefer an a la carte approach? Enjoy our Class Packs or Gift Cards or tailor a program based on your unique time, budget, and goals.

RSVP as a VIP. Contact Ann Marie Barbour, Director of Programming & Operations, to learn more or get started TODAY.

[ANNMARIE@THEMINE.FIT](mailto:ANNMARIE@THEMINE.FIT) | 443.966.MINE | [THEMINE.FIT](http://THEMINE.FIT)

# TOWSON LIVE

When you buy a car at **JERRY'S**,  
we throw in the dealership!

2022 Toyota  
**TACOMA**



- ✓ **Jerry's Extended Care** up to 4 Years/50K ✓ Car Washes for Life
- Miles of Factory Maintenance ✓ Tire Rotations for Life
- ✓ Complimentary 30K Mile Service ✓ GO GREEN Nitrogen Inflation
- ✓ Complimentary One Year of Maintenance & Roadside Assistance on all Pre-Owned Vehicles

**JERRY'S**  
It's About *you!*



8001 Belair Road Exit 32B  
410-661-5700  
[JerrysToyota.com](http://JerrysToyota.com)

Jerry's It's About You Loyalty benefits are eligible on all New vehicles purchased at Jerry's Auto Group after 1/1/16. Complimentary maintenance and roadside assistance are available on all pre-owned vehicles sold after 5/1/13. Prior sales excluded. See dealer for details.

## TAP INTO TU

Towson University is committed to engaging with local businesses, organizations and nonprofits to spur economic development and create positive impact. There are a variety of ways to engage with Towson University.

- ★ Certification & Training Programs
- ★ Data Analysis, GIS, & Tech Support
- ★ Dr. Nancy Grasmick Leadership Institute
- ★ Event Hosting
- ★ Graduate Programs
- ★ Internship & Employment Needs
- ★ Procurement Services
- ★ StarTUp at the Armory
- ★ Subject Matter Experts
- ★ University Advancement Corporate Relations



**Connect and network at the first TAP INTO TU event**

**Thursday, June 2  
9–10:30AM**

**StarTUp at the Armory  
307 Washington Avenue, Towson**

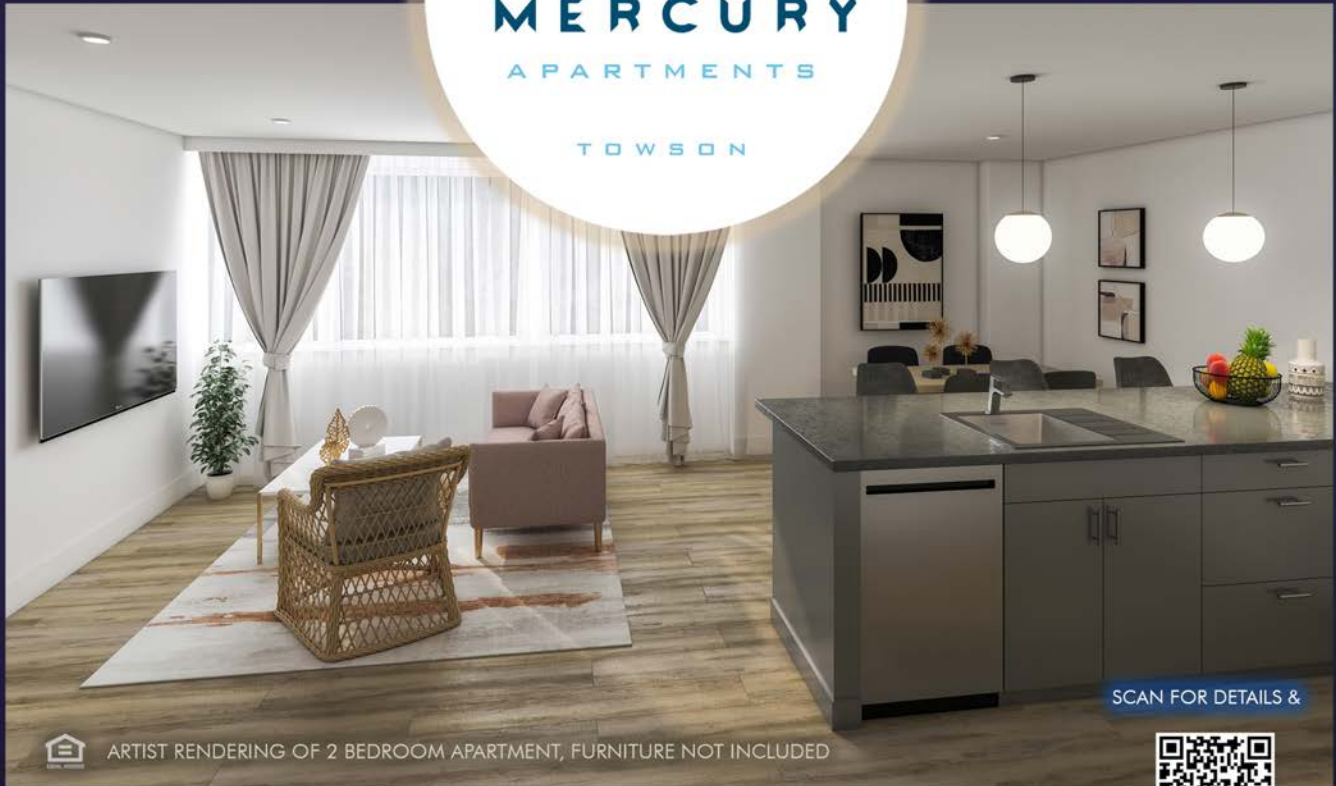
**Learn more and register at  
[tinyurl.com/TapIntoTU](https://tinyurl.com/TapIntoTU)**

# TOWSON LIVE

COMING LATE 2021  
LIVE • WORK • PLAY  
IN TOWSON



MERCURY  
APARTMENTS  
TOWSON



ARTIST RENDERING OF 2 BEDROOM APARTMENT, FURNITURE NOT INCLUDED

SCAN FOR DETAILS &



WAITLIST SIGN UP

17 WEST  
PENNSYLVANIA AVE.

Washer/Dryer • Microwave • Oven/Cooktop • Dishwasher • Refrigerator • Balcony Option • HVAC • Buzzer Entry System

Close to: Whole Foods, Towson University, Baltimore County Office Buildings, Courthouse, Towson Row, Towson Square  
Towson Town Center, Towson Library, Restaurants, Bars, and Shopping!

## 2021-2022 TOWSON CHAMBER BOARD OF DIRECTORS

### OFFICERS



**Brandon Simpson**  
*President*  
Palisades of Towson



**Emily Brophy**  
*Vice President*  
Tan & Associates



**Anthony DiMartino**  
*Treasurer*  
Rosen, Sapperstein, &  
Friedlander



**Tom Gronert**  
*Secretary*  
UM St. Joseph  
Medical Center

### BOARD MEMBERS

Jon Christiana, C&E Financial Services

Stephanie Coldren, Goucher College

Charles Connolly, Farmers Insurance Group

Colin Exelby, Celestial Wealth Management

Sandy Gurchik, Cummings & Co.

Ed Hale, Hale Transport

Nancy Hofmann, Compass

C.R. Hogendorp, American National Insurance

Todd Huff, Brooks-Huff Tire & Auto Centers

Trevor Iles, Towson University

Ed Kilcullen, Maryland CASA

Gregg Landry, BlueRock Productions

Natalie Martz, Chick fil A at Towson Town Center

Kevin Murphy, Conceirge Mortgage

Debbie Phelps, Education Foundation of Baltimore  
County Public Schools

Kaitlin Radebaugh, Radebaugh Florist  
& Greenhouses

Paul Schwab, Azrael, Franz, Schwab, Lipowitz &  
Solter, LLC

Joe Shagena, Destiny Mortgage Group

Melony Wagner, Charles Village Pub

### Towson Chamber Staff:



**Nancy Hafford**  
*Executive Director*



**Calixta Eraso**  
*Media & Marketing  
Director*



## 2021-2022 MEMBERSHIP APPLICATION

Business Name: \_\_\_\_\_

Contact Person: \_\_\_\_\_

Address: \_\_\_\_\_  
\_\_\_\_\_

Phone: \_\_\_\_\_ Fax: \_\_\_\_\_

Email: \_\_\_\_\_

Website: \_\_\_\_\_

Number of Employees: \_\_\_\_\_

Type of Business as listed in the Yellow Pages: \_\_\_\_\_

How did you hear about us? \_\_\_\_\_

### Please check the appropriate values:

- \_\_\_\_\_ 1-20 employees: \$300
- \_\_\_\_\_ 21-30 employees: \$400
- \_\_\_\_\_ 31-45 employees: \$450
- \_\_\_\_\_ 46-75 employees: \$500
- \_\_\_\_\_ 76-100 employees: \$525
- \_\_\_\_\_ Over 100 employees: \$1,000

### Plus \$30 one-time application fee

= Total Investment \$ \_\_\_\_\_

Return this application with your dues investment made payable to:

Towson Chamber of Commerce  
44 W. Chesapeake Avenue  
Towson, MD 21204

*To pay by credit card, please call the chamber office: 410-825-1144*

**Add sponsorship opportunities  
for 2020-2021  
Winterfest & Baltimore County  
Tree Lighting  
Towson Beautification Program  
Towson 4th of July Parade &  
Race  
Taste of Towson  
Chamber Golf Tournament  
Gardens Day**

**For more information on  
sponsorship packages, contact the  
chamber office:  
410-825-1144**

Please Be Advised:

Internal Revenue Bureau Cumulative Bulletin, No 2, page 105 reads: Membership fees or dues by individuals to a Chamber of Commerce are deductible from gross income as a business expense provided the memberships is employed as a means of advancing the business interests of the individual corporation.



**Towson Chamber of Commerce**

44 W. Chesapeake Avenue  
Towson, MD 21204

[info@towsonchamber.com](mailto:info@towsonchamber.com)

Phone: 410-825-1144

Fax: 410-832-5863