

# TOWSON LIVE

March 2023



## Inside this Issue

March Cocktail Party	1
February Member Meeting	2
Community Safety Walk	3
Towson Spring Festival & Gardens Day	4
Safe Space Program	5-6
Board of Directors	7
New Members	8
March Cocktail Party	9
Member-to-Member	10
Rosedale Federal	11
Dogtopia of Towson	12
Family Safety Day	13
Trialliance Lease	14
Spring Allergies	15
Spring Festival Car Show	16
The Mine Corporate Membership	17
Mercury Apartments	18
Board of Directors	19
2023 Member Application	20



**March 15**

**Palisades of Towson, 5th Floor**

**212 Washington Avenue**

**Towson, MD 21204**

**5:00pm - 7:30pm**

Cocktails & Hors d'oeuvres will be provided.

Must RSVP online on our website

[www.towsonchamber.com](http://www.towsonchamber.com)

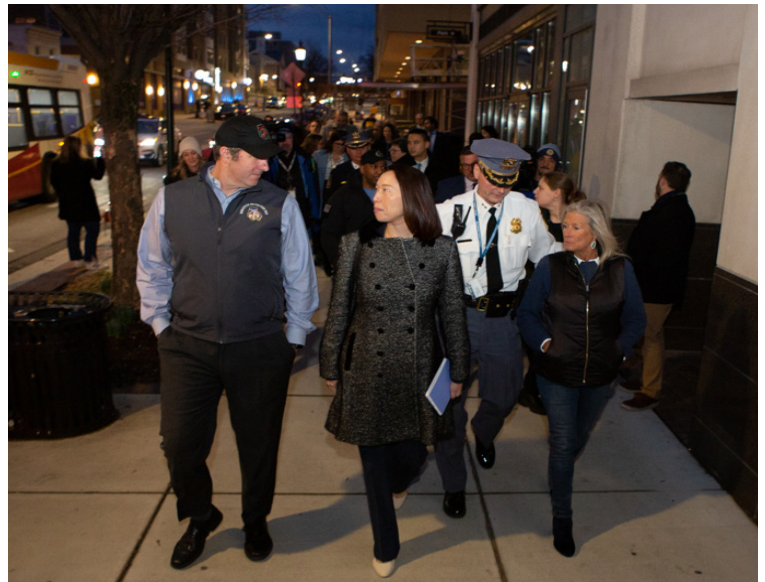
# TOWSON LIVE

February Member Meeting at the Sheraton Baltimore North Hotel. We had States Attorney Scott Shellenberger, Major Dee Chemelli, Captain Sam Houston, Councilman Mike Ertel give an update on community safety. Thank you to our members for your continued support!



# TOWSON LIVE

Baltimore County Executive Johnny Olszewski joined Baltimore County Councilman Mike Ertel, Baltimore County Police Department leadership, stakeholders from Towson Chamber of Commerce, Towson University, Goucher College and Towson area business owners and community advocates for a public safety meeting and community walk in Towson. The group spoke with residents and business owners to identify pressing public safety and quality of life issues and demonstrate commitment to solving problems. Olszewski also announced some steps moving forward, including a new license plate reader, additional cameras and more foot patrols targeting specific days and times.



# TOWSON LIVE



May 6th 10 AM - 8 PM & May 7th 1 PM - 6 PM



CARNIVAL • FOOD TRUCKS • VENDORS  
BEER GARDEN • LIVE PERFORMANCES

## FREE ENTRY & LIVE MUSIC BY:

Gravity - Southland (formerly Day Drinkin' - Crushing Day

Doc Marten & the Flannels - Kelly Bell Band

400 Washington Avenue, Towson MD 21204

[www.towsontownfestival.com](http://www.towsontownfestival.com) 410-825-1150



@towsontownspringfestival



@towsonchamber



# Towson GARDENS DAY Thursday, May 4th

10 am-3 pm

Upper Pennsylvania Avenue

PLANTS • FOOD TRUCKS • CRAFTS • LIVE MUSIC



Connect with us on Facebook @towsongardensday





Connect with us on Instagram @towsonchamber

# TOWSON LIVE

The Towson Chamber of Commerce is now apart of the Safe Space Program! This program provides members of the LGBTQIA+ community who have experienced a hate crime with a safe place to seek help. For more information see the next page.



This location is a Safe Space for victims of Anti-LGBTQIA+ crimes and harassment to call 911 and wait for law enforcement to arrive.

 Baltimore County Police Department stands with you. 

<https://www.baltimorecountymd.gov/safespace>

The sign features a shield-shaped logo with a rainbow gradient and the words 'Safe Space' in large, bold, black letters. Below the logo, there is a message about being a safe space for victims of anti-LGBTQIA+ crimes, a contact instruction to call 911, and a statement of support from the Baltimore County Police Department. A QR code and a website URL are also included.



## SAFE SPACE REQUEST FORM

Name of Applicant

\_\_\_\_\_

First

\_\_\_\_\_

Last

\_\_\_\_\_

Name of Business

\_\_\_\_\_

Address of Business

\_\_\_\_\_

Email Address

\_\_\_\_\_

Phone Number

Type of decal desired

8x10 Poster

Quantity \_\_\_\_\_

4x6 Window Decal

Quantity \_\_\_\_\_

Commitment Pledge

I agree to use these decals for their intended purpose by posting them at my business. I further agree to instruct my organization's employees to assist the victims and/or witnesses to anti-LGBTQ crimes by calling the police or a friend on their behalf and allowing them to remain on my premise until help arrives.

Signature \_\_\_\_\_ Date \_\_\_\_\_

Email completed form to [SafeSpaceBCoPD@baltimorecountymd.gov](mailto:SafeSpaceBCoPD@baltimorecountymd.gov)

## 2022-2023 Towson Chamber Board of Directors



## NEW MEMBER SPOTLIGHT

Welcome to the Towson Chamber!



### **Tustin Mechanical**

Rick Bray  
9003 Yellow Brick Rd, Suite K  
Baltimore, MD 21237  
(443) 591-0818  
HVAC Contractor

### **Karsos Properties LLC**

Peter Karsos  
400 York Road  
Towson, MD 21204  
(410) 299-7417  
Property Management



*Please Join Us!*

## **Board & Member Cocktail Party**

Wednesday, March 15

5:00pm - 7:30pm

*Please RSVP online.*

*There will be no breakfast meeting this month.*

### **Palisades of Towson**

212 Wahsington Avenue  
5th Floor

Towson, MD 21204

## **Have you renewed your membership for 2023?**

Membership can be renewed by sending a check to the Chamber office or over the phone via credit card:  
**410-825-1144**

Questions? Contact Calixta  
calixta@towsonchamber.com

## **Advertising & Promotion Opportunities**

### **One-Page Insert**

Advertise a special sale or promotion with an 8.5x11" insert for \$50 in our monthly newsletter. Advertising for community events is free.

### **Email Sponsorship**

"Sponsor" an email that goes out to over 1500 business contacts. Includes your logo and a click-through to your website. (Costs vary)

### **Towson Times**

Advertise in the Towson Times (costs vary)

### **Questions?**

Contact: Nancy Hafford  
nancy@towsonchamber.com

## Member-to-Member Benefits

*Enjoy these specials offered exclusively for members of the Towson Chamber. Businesses may reference the Chamber Directory, or contact the Chamber office to confirm eligibility.*

### **Dogtopia of Towson: alexander.davis@dogtopia.com**

Two free weeks daycare enrollment for Towson Chamber Members.

### **The Mine- Anne Marie Barbour annmarie@themine.fit**

As a member of the Towson Chamber you have access to The Mine Corporate Membership. Remember you don't need 5 or more, anyone from the Towson Chamber can get it, IF your company wants to get this rate, they will have to get 5 or more.

### **Staples**

10% off in-store purchases and 20% off printing and marketing services.

### **Charles Village Pub & Patio- Melony Wagner melony@cvptowson.com**

20% off to members for food, beverages, and catering. This offer cannot be combined with any other discount or promotion.

### **Towson University- Chunta Rivers crivers@towson.edu**

Towson University and the Towson Chamber of Commerce have agreed to a corporate training partnership that provides access to professional development opportunities. The Towson Chamber of Commerce members are eligible to receive 20% off certification programs and 10% off fundamental programs.

### **Nancy Hofmann, Compass Realty & Live Towson- Nancy.Hofmann@compass.com -**

FREE professional home staging when you sell your home with Nancy Hofmann, Compass – Towson Office.

### **Fully Promoted Towson - Jessica Joyce, jessica.joyce@fullypromoted.com**

One free digitizing of company logo (\$69.00 value) to all chamber members. Must mention member-to-member promo.

### **Integrated Pest Services - Sandy Jenkins, service@ipspest.com**

10% off of all pest services for Towson Chamber members

### **RISE Biscuits and Donuts – David Brindza, towson@risebiscuitsdonuts.com**

Free Sweet Treat Platter (\$31.95 value) to all Catering Breakfast and Lunch orders over \$100. Monday through Friday. Pickup between 7:30 am and 2 pm. Must mention the Member to Member promo.

### **The Point in Towson – Erica Russo, erica@thepointrg.com**

20% off to all members for food, beverages and catering. Cannot be combined with any other discount or promotion.

## The 10% Rule

Keep your business local and make 10% of your expenditures stay within Towson. Just think of the impact... If a company grosses \$300,000.00 per year and they see an additional 10% or \$30,000.00, that could mean hiring someone, expanding product lines, or making their interior and exterior look better.

Keep business in Towson and create a positive environment for our community!

# Check us out for your Business Banking needs!



Stop by or call Allison Murray at our Towson branch: 410.377.4330 or Julie Reynolds at our Timonium branch: 410.970.6225



Your neighbor.  
Your guide.  
Your bank.

Abingdon | Arbutus | Bel Air | Dundalk | Forest Hill | Overlea | Parkville  
Pasadena | Perry Hall | Rosedale | Timonium | Towson | White Marsh



[rosedalefederal.com](http://rosedalefederal.com)





dogtopia®



SCAN TO ACCESS THIS  
*limited time offer*

**Two Weeks Free**  
*daycare enrollment for  
chamber members!*

**GIVE YOUR**  
**DOG** the **GIFT**  
of *daycare!*

**Dogtopia of Towson**

1270 East Joppa Rd., Suite 200  
Towson, MD 21286  
dogtopia.com/baltimore-Towson  
410-541-5222



Safe, open-play daycare



Exercise & education



Fun-filled days with their BFFFs®  
(Best Furry Friends Forever)



Live playroom webcams

All dogs must pass an evaluation to ensure their safety and comfort in open-play environment.

# Family Safety Day

*Saturday, March 4, 2023*

10 am—4 pm

## FREE ADMISSION!

- ⇒ Learn about family safety from state and local organizations:
  - Maryland Emergency Management Agency
  - Fireline Co.
  - Maryland State Fire Marshal
  - Many More!
  
- ⇒ FMM's Living History program at 11.
  
- ⇒ Meet local first responders.
  
- ⇒ Antique Fire Truck Rides!  
weather permitting



1301-R York Road  
Lutherville, MD

410-321-7500

[firemuseummd.org](http://firemuseummd.org)



THE CITIZENS OF  
BALTIMORE COUNTY



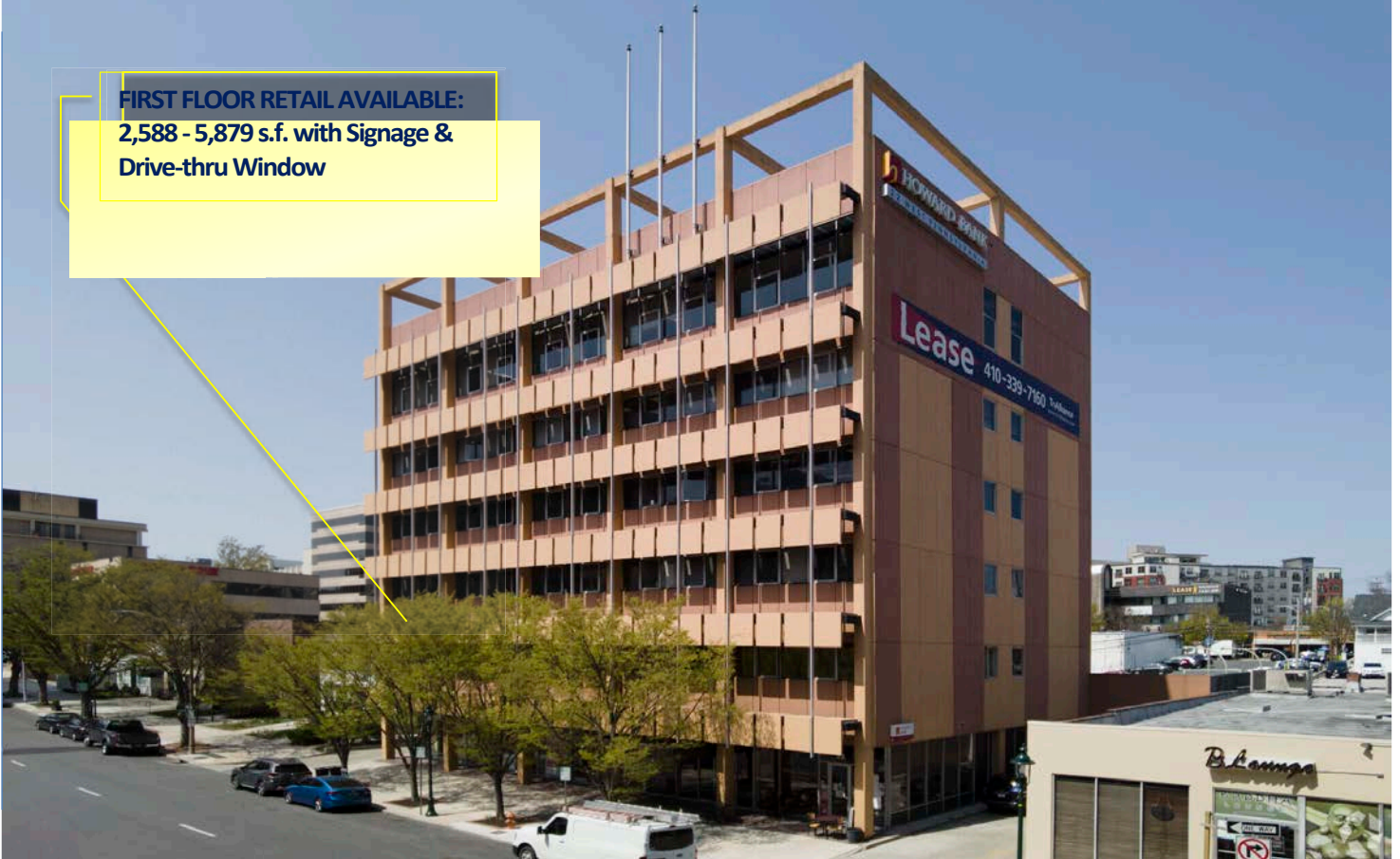
# TOWSON LIVE

FOR  
LEASE

RETAIL & OFFICE SPACE  
PRIME TOWSON LOCATION

22 W. Pennsylvania Avenue  
Towson, Maryland 21204

FIRST FLOOR RETAIL AVAILABLE:  
2,588 - 5,879 s.f. with Signage &  
Drive-thru Window



For more information,  
please contact:

Christopher Smith, SIOR  
410-472-3510 x108  
410-382-1869 (mobile)  
csmith@trialliance.com

Andrew Brink  
410-472-3510 x109  
518-225-8244 (mobile)  
abrink@trialliance.com

22 W. Pennsylvania Ave.  
Suite 600  
Towson, MD 21204

[www.trialliance.com](http://www.trialliance.com)

## HIGHLIGHTS

- Office suites range from 357 s.f. to 1,676 s.f.
- Available for immediate occupancy.
- Convenient parking on-site for \$80 per space per month.
- All offices include windows with views of Towson.
- Building amenities include Coffee Talk Cafe on the first floor.

# TriAlliance

COMMERCIAL REAL ESTATE SERVICES

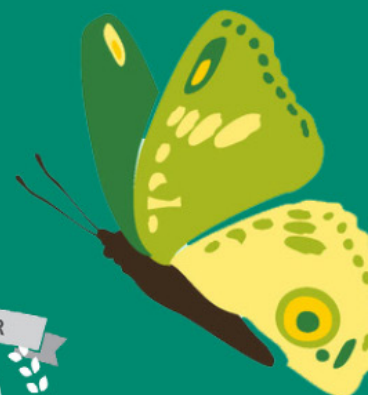


## SPRING ALLERGIES

As the weather warms up, do you find yourself suffering from springtime allergies? Don't worry, you're not the only one dreading the sneezing and the sniffing.

### HERE ARE SOME WAYS TO HELP ALLEVIATE ALLERGY SYMPTOMS:

- Start taking over-the-counter antihistamines when high pollen counts are forecast, even before your symptoms start.
- Stay indoors on dry, windy days. The best time to go outside is after a rain, which helps clear pollen from the air.
- Keep windows and doors closed – Restricting the amount of outside air that comes into your home may help those with airborne allergen sensitivities.
- Delegate lawn mowing, weed pulling, and other gardening chores that stir up allergens.
- After spending time outside, take a shower to rinse pollen from your skin and hair and put on clean clothes.
- Wear a face mask if you do outside chores
- Use air conditioning in your house and car.
- Use high-efficiency air filters and change them frequently.
- Keep indoor air dry with a dehumidifier.



**Patient First**<sup>®</sup>



# TOWSON LIVE



## CAR SHOW



**Saturday, May 6th: 10AM-2PM**

**Sunday, May 7th: 12PM-4PM**

**LIMITED AVAILABILITY!**

**Register @ [www.towsontownfestival.com/applications](http://www.towsontownfestival.com/applications)**

THE BLUE  FOUNDATION

The logo for The Blue Valor Foundation features the word "Valor" in a white, cursive script font, centered within a black rectangular box. The words "THE BLUE" are to the left and "FOUNDATION" is to the right of the box.



# TOWSON LIVE



## THE MINE

The future is Mine and it's yours for the taking. Experience a health and wellness concept like no other. Located within The Shops at Kenilworth, The Mine is committed to helping each and every member be the best version of themselves. We embrace business' who do the same with our Corporate Wellness Memberships.

### Five Studios, One Roof

Our five, unique boutique studios are led by Baltimore's best. Immerse yourself; enjoy BARRE, YOGA, RIDE+, YARD, FORM all under one roof.

### From Pre- to Post-Workout

Sweat it out in our Open gyM, relax in our luxury locker rooms with private IR Saunas, enjoy our Juice Bar, co-working LOUNGE, and more.

Be a VIP; enjoy exclusive membership discounts as a Corporate Wellness Partner:

### GYMPASS

**\$74 PER MONTH**

Regularly \$99 per month

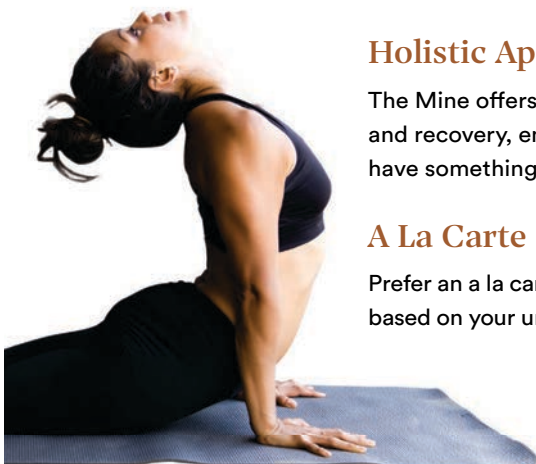
- Innovative Open gyM
- Top-of-the-line Technogym equipment
- Connected cardio with virtual coaches
- Access to Personal + Small Group Training

### STUDIO MPASS

**\$150 PER MONTH**

Regularly \$249 per month

- Open gyM + UNLIMITED access to: BARRE, YOGA, RIDE+, YARD
- Luxury locker rooms with IR Saunas
- Co-working LOUNGE and Juice Bar
- FORM Class Packs available (5 and 10 packs)



### Holistic Approach

The Mine offers a range of solutions and support across mindset, nutrition, movement, and recovery, enabling members to round out their efforts to reach their goals. We have something for just about every mood, goal, taste, experience level, and schedule.

### A La Carte

Prefer an a la carte approach? Enjoy our Class Packs or Gift Cards or tailor a program based on your unique time, budget, and goals.

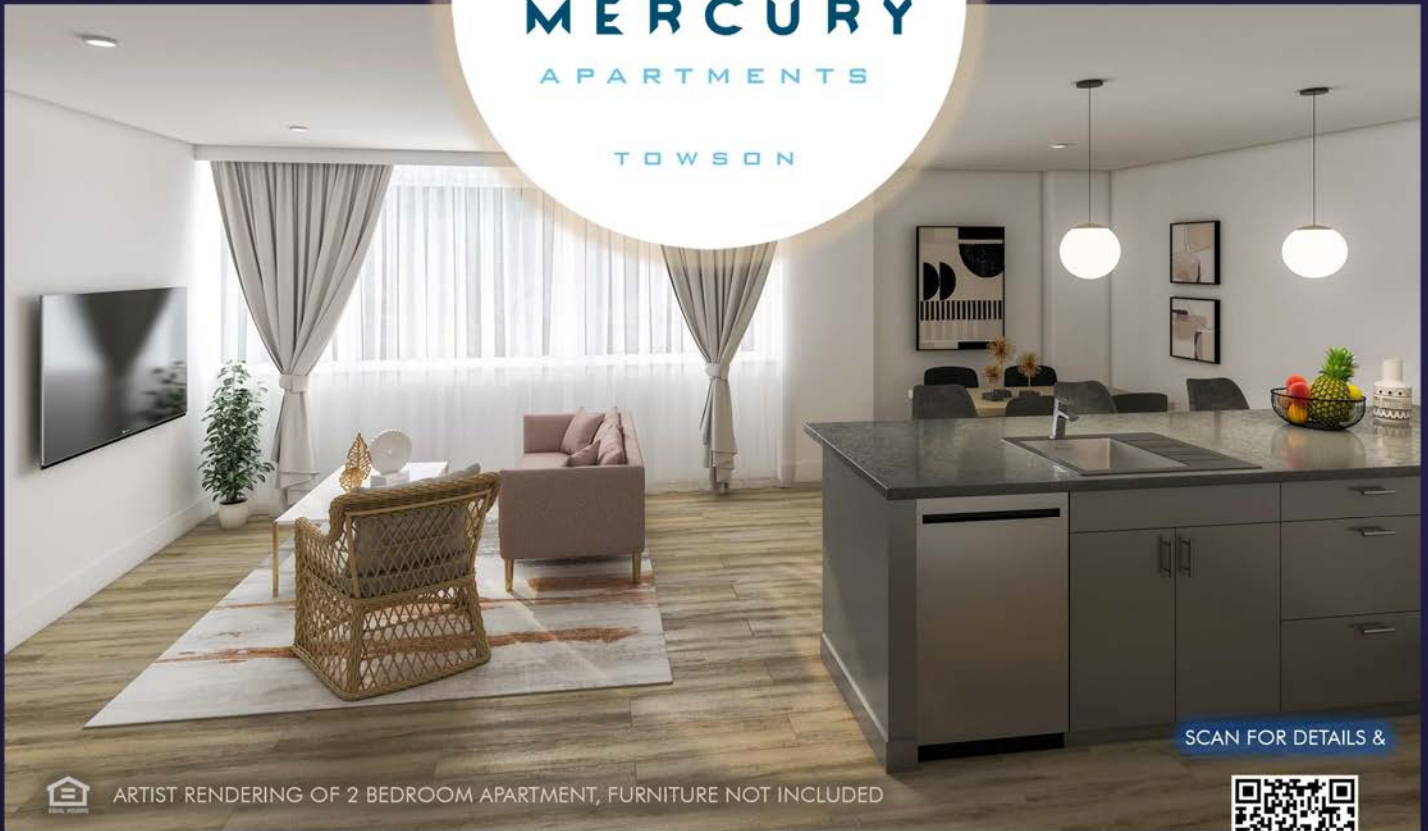
RSVP as a VIP. Contact Ann Marie Barbour, Director of Programming & Operations, to learn more or get started TODAY.

[ANNMARIE@THEMINE.FIT](mailto:ANNMARIE@THEMINE.FIT) | 443.966.MINE | [THEMINE.FIT](http://THEMINE.FIT)

TOWSON LIVE

COMING SOON!

LIVE • WORK • PLAY  
IN TOWSON



ARTIST RENDERING OF 2 BEDROOM APARTMENT, FURNITURE NOT INCLUDED

SCAN FOR DETAILS &



WAITLIST SIGN UP

17 WEST  
PENNSYLVANIA AVE.

Washer/Dryer • Microwave • Oven/Cooktop • Dishwasher • Refrigerator • Balcony Option • HVAC • Buzzer Entry System

Close to: Whole Foods, Towson University, Baltimore County Office Buildings, Courthouse, Towson Row, Towson Square  
Towson Town Center, Towson Library, Restaurants, Bars, and Shopping!

# TOWSON LIVE

## 2022-2023 TOWSON CHAMBER BOARD OF DIRECTORS

### OFFICERS



**Emily Brophy**  
*President*  
Tan & Associates



**Tom Gronert**  
*Vice President*  
UM St. Joseph  
Medical Center



**Anthony DiMartino**  
*Treasurer*  
Communications  
Electronics, Inc.



**Natalie Martz**  
*Secretary*  
Chick-fil-A



**Brandon Simpson**  
*Past President*  
Palisades of Towson

### BOARD MEMBERS

Jon Christiana, C&E Financial Services

Tracy Carroll, Rosedale Federal Savings & Loan

Charles Connolly, Farmers Insurance Group

Sandy Gurchik, Cummings & Co.

Ed Hale, Hale Transport

Nancy Hofmann, Compass

C.R. Hogendorp, American National Insurance

Trevor Iles, Towson University

Michele Ewing, Goucher College

Mark Shulman, DDS

Ed Kilcullen, Maryland CASA

Gregg Landry, BlueRock Productions

Kevin Murphy, Beacon Light Mortgage

Deborah Phelps, Education Foundation of

Baltimore County Public Schools

Kaitlin Radebaugh, Radebaugh Florist  
& Greenhouses

Paul Schwab, Azrael, Franz, Schwab, Lipowitz &  
Solter, LLC

Joe Shagena, Destiny Mortgage Group

Melony Wagner, Charles Village Pub

Steve Norris, Financial Fitness

### Towson Chamber Staff:



**Nancy Hafford**  
*Executive Director*



**Calixta Eraso**  
*Marketing &  
Program Director*



**Sydney Waters**  
*Membership  
Coordinator*



**Joseph O'Donnell**  
*Community  
Ambassador*

## 2022-2023 MEMBERSHIP APPLICATION

Business Name: \_\_\_\_\_

Contact Person: \_\_\_\_\_

Address: \_\_\_\_\_  
\_\_\_\_\_

Phone: \_\_\_\_\_ Fax: \_\_\_\_\_

Email: \_\_\_\_\_

Website: \_\_\_\_\_

Number of Employees: \_\_\_\_\_

Type of Business as listed in the Yellow Pages: \_\_\_\_\_

How did you hear about us? \_\_\_\_\_

### Please check the appropriate values:

- \_\_\_\_\_ 1-20 employees: \$325
- \_\_\_\_\_ 21-30 employees: \$425
- \_\_\_\_\_ 31-45 employees: \$475
- \_\_\_\_\_ 46-75 employees: \$525
- \_\_\_\_\_ 76-100 employees: \$575
- \_\_\_\_\_ Over 100 employees: \$1,000

### Plus \$30 one-time application fee

= Total Investment \$ \_\_\_\_\_

Return this application with your dues investment made payable to:

Towson Chamber of Commerce  
44 W. Chesapeake Avenue  
Towson, MD 21204

*To pay by credit card, please call the chamber office: 410-825-1144*

**Add sponsorship opportunities  
for 2022-2023  
Winterfest & Baltimore County  
Tree Lighting  
Towson Beautification Program  
Towson 4th of July Parade &  
Race  
Taste of Towson  
Chamber Golf Tournament  
Gardens Day  
For more information on  
sponsorship packages, contact the  
chamber office:  
410-825-1144**

Please Be Advised:

Internal Revenue Bureau Cumulative Bulletin, No 2, page 105 reads: Membership fees or dues by individuals to a Chamber of Commerce are deductible from gross income as a business expense provided the memberships is employed as a means of advancing the business interests of the individual corporation.



**Towson Chamber of Commerce**

44 W. Chesapeake Avenue  
Towson, MD 21204

[info@towsonchamber.com](mailto:info@towsonchamber.com)

Phone: 410-825-1144

Fax: 410-832-5863